

Montgomery Township School District Statewide Assessment Results 2022-2023

Presented by:
Fiona Borland
Director of Curriculum, Assessment & Staff Development

October 30, 2023



Assessments 2022-2023



ACCESS 2.0

Dynamic Learning Maps (DLM)

New Jersey Student Learning Assessment (NJSLA)

- **English Language Arts (ELA)**
- **Math**
- **Science**



Protecting Confidentiality



In the reporting of group assessment data, the intent is to protect student privacy through procedures that systematically prevent members of the public from discerning student identity.

Guidelines provided by the Federal government state that in the reporting of assessment results, suppression of numbers should occur in categories where the counts are low, making it otherwise impossible to infer the results of the individuals.

The Every Student Succeeds Act (ESSA) specifies that states must select a minimum number of students (minimum n-size) necessary for a particular group (“subgroup”) to be included in the ESSA school accountability system.

The NJDOE maintains 10 as its minimum n-size for school and district reporting.



ACCESS 2.0: Spring 2023 Administrations

ACCESS 2.0

What:	<p>Assessing Comprehension and Communication in English State-to-State for English Language Learners</p> <p>Is given annually to monitor students' progress in learning academic English</p> <p>Meets U.S federal requirements of the Every Student Succeeds Act (ESSA) for monitoring and reporting ELs' progress towards English language proficiency</p> <p>Is anchored in the WIDA English Language Development Standards</p> <p>Assesses the four language domains of Listening, Speaking, Reading, and Writing</p>
Who:	<p>Is administered to Kindergarten through Grade 12 students who have been identified as English Language Learners (ELs) .</p> <p>Beginning in the 2023-2024 school year, students who were previously identified as ELs will be identified as Multilingual Learners (MLs). This represents a shift to an assets-based language and lens.</p>
When:	<p>Was administered between February 2022 -April 2023</p>

ACCESS 2.0

Entering: Knows and uses minimal social language and minimal academic language with visual and graphic support

Emerging: Knows and uses some social English and general academic language with visual and graphic support

Developing: Knows and uses social English and some specific academic language with visual and graphic support

Expanding: Knows and uses social English and some technical academic language

Bridging: Knows and uses social and academic language working with grade level material

Reaching: Knows and uses social and academic language at the highest level measured by this test

ACCESS Students K-3 Overall Score



Grade Level	Entering	Emerging	Developing	Expanding	Bridging	Reaching
K	50%	17%	25%	8%	0%	0%
1	8%	33%	42%	8%	8%	0%
2	0%	36%	36%	27%	0%	0%



ACCESS 2.0

Because we did not meet the minimum n-size of participation per grade level with the exception of three grades presented, the scores will not be reported at the grade or subgroup level.

The next administration of ACCESS 2.0 will be February 5, 2024 - March 29, 2024.

Dynamic Learning Maps (DLM): Spring 2023 Administrations

DLM

Dynamic Learning Maps (DLM)

What:	<p>The alternate assessment in English Language Arts, Mathematics, and Science for students with the most significant intellectual disabilities.</p> <p>Students are not compared to other students, but evaluated for their own progress.</p>
Who:	<p>Students in grades 3-8 and grade 11 participated in ELA & Math. Students in grades 5, 8, and 11 also participated in Science.</p> <p>Eligibility determined by Child Study Team according to individual student learning needs/ability.</p>
When:	<p>Was administered between April 2023 - May 2023</p>

Dynamic Learning Maps (DLM)

Because we did not meet the minimum n-size of participation per grade level, the scores will not be reported at the grade or subgroup level.

The next administration of DLM will be April 8, 2024 to May 31, 2024.

New Jersey Student Learning Assessment (NJSLA)

**Results:
Spring 2023 Administrations**



- ELA

- Grade 3-9

- Science

- Grade 5,8,& 11

- Math

- Grade 3-8
- Algebra I
- Geometry
- Algebra II

NJSLA ELA & Mathematics Performance Levels



NJSLA Performance Level	Descriptor
LEVEL 1	Not yet meeting grade-level expectations
LEVEL 3	Partially meeting grade-level expectations
LEVEL 3	Approaching grade-level expectations
LEVEL 4	Meeting grade-level expectations
LEVEL 5	Exceeding grade-level expectations



New Jersey Student Learning Assessment (NJSLA)

**Results:
Spring 2023 Administrations**

ELA

Comparison of Montgomery's Spring 2022 and 2023 NJSLA Administrations English Language Arts – Percentages



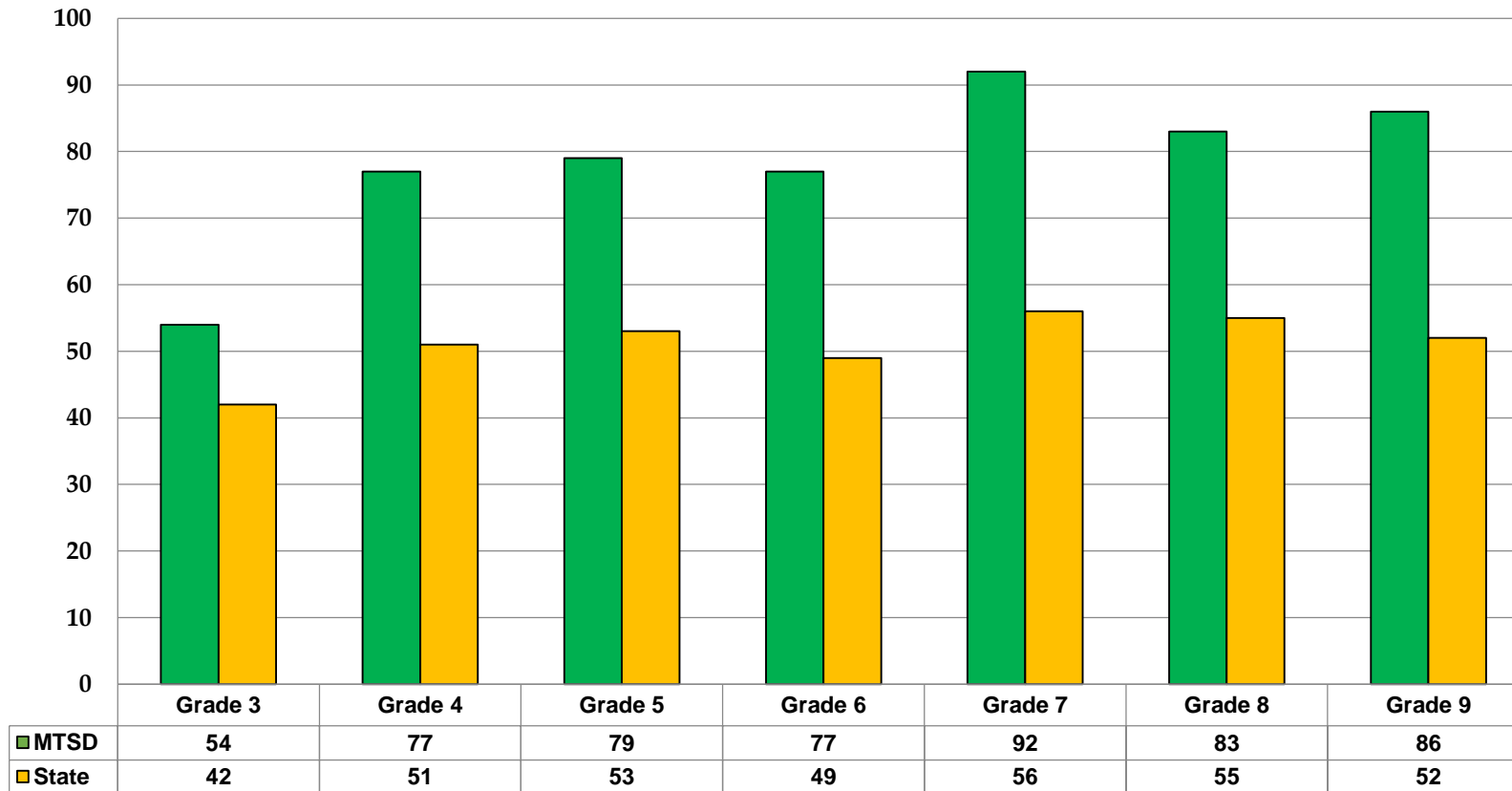
- Level 1: Not Yet Meeting Expectations
- Level 2: Partially Meeting Expectations
- Level 3: Approaching Expectations
- Level 4: Meeting Expectations
- Level 5: Exceeding Expectations

Grade	Level 1 2022	Level 1 2023	Level 2 2022	Level 2 2023	Level 3 2022	Level 3 2023	Level 4 2022	Level 4 2023	Level 5 2022	Level 5 2023	Change in Level 1 and Level 2 from 2022 to 2023	Change in Level 4 and Level 5 from 2022 to 2023
3	13	6.6	12	10.3	23	29.1	50	48.7	2	5.3	- 8	+ 3
4	4	3.8	7	7.9	16	11.4	44	44.6	29	32.3	+ 0.7	+ 3.9
5	3	2.8	5	6.4	16	12.3	56	62	20	16.5	+ 1.2	+ 2.5
6	4	1.1	6	6.1	27	15.8	54	51.3	9	25.7	- 2.8	+ 14
7	3	1.4	5	2	10	4.5	30	29	52	63.1	- 4.6	+ 10.1
8	3	2.1	9	1.9	17	13.3	44	40.3	27	42.4	- 8	+ 11.7
9*	1	3.3	5	3.8	13	7.3	47	48.2	35	37.4	- 1.1	+ 3.6

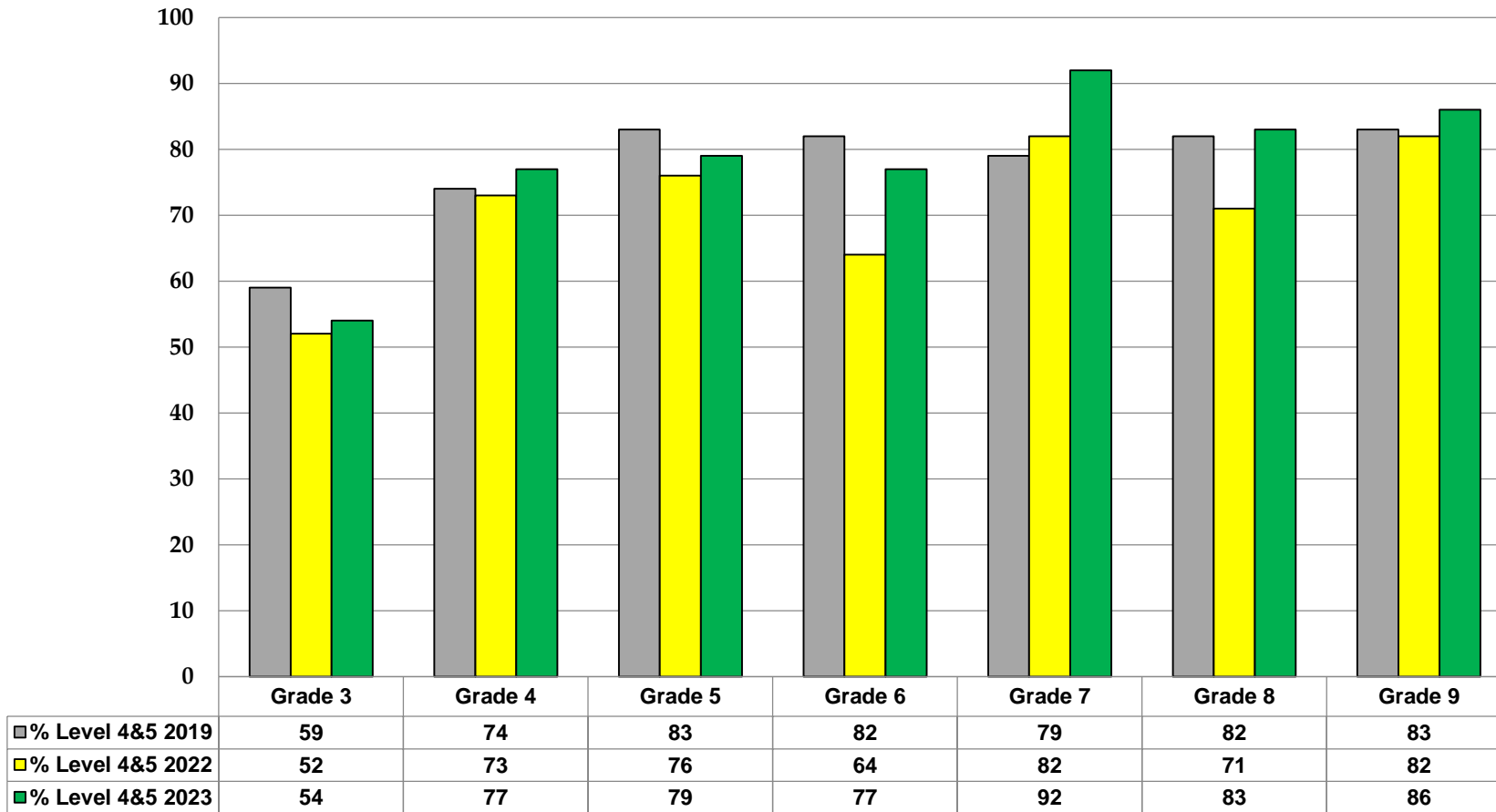
Notes: Percentages may not total 100 due to rounding. *Grade 9 rows includes grade 9 students only.



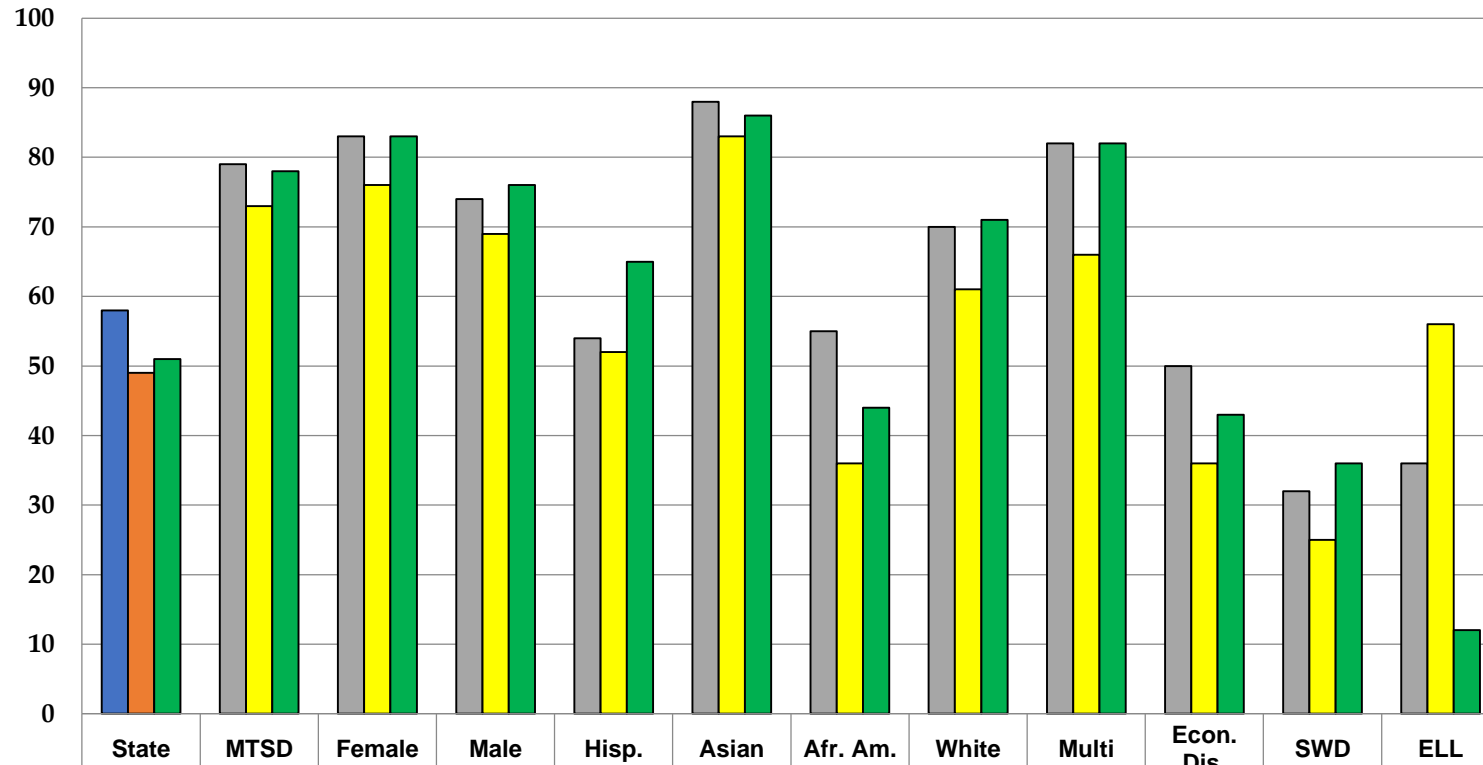
Comparison of Montgomery and the State Spring 2023 NJSLA Administration English Language Arts Percentages of Students Meeting & Exceeding Expectation



Comparison of Montgomery's Spring 2019, 2022 and 2023 NJSLA Administrations English Language Arts Percentages of Students Meeting & Exceeding Expectation



Comparison of Montgomery's Spring 2019, 2022 and 2023 NJSLA Administrations English Language Arts Percentages of Students Meeting & Exceeding Expectation by Demographic Groups



■ % Level 4&5 2019	58	79	83	74	54	88	55	70	82	50	32	36
■ % Level 4&5 2022	49	73	76	69	52	83	36	61	66	36	25	56
■ % Level 4&5 2023	51	78	83	76	65	86	44	71	82	43	36	12





Notable Achievements (ELA)



- The majority of our grade-levels are back to or above pre-pandemic achievement levels. All other grade levels are trending up.
- Increase in Universal Design for Learning strategies which allow more students to access and master content.
- Increase in data-driven, targeted instructional practices.
- Increase in classroom level (Tier 1) interventions in order to accelerate the learning gap closure.



ELA Interventions



Elementary (K-4)

Implementation of STAR360 assessment platform to monitor students progress and determine students in need of interventions.

An instructional shift within our intervention programs from curriculum support and to a more data-driven intervention model.

Additional professional learning on foundational reading skills and writing.

Middle (Grades 5-8)

High (Grades 9-12)

Implementation of STAR360 assessment platform within ENG CP 9 & 10.

Continues success of the Literacy Lab classes.

New Jersey Student Learning Assessment (NJSLA)

**Results:
Spring 2023 Administrations**

Math



- **Grade 8 data:** Students in grade 8 participated in the HS Math assessments in place of the 8th grade Math assessment. Thus, Math 8 outcomes are not representative of grade 8 performance as a whole.
- **Algebra I, Geometry & Algebra II data:** Students in grades 11 and 12 were not included.
- Percentages may not total 100 due to rounding.

Comparison of Montgomery's Spring 2022 and 2023 NJSLA Administrations Mathematics – Percentages



• Level 1: Not Yet Meeting Expectations

• Level 2: Partially Meeting Expectations

• Level 3: Approaching Expectations

• Level 4: Meeting Expectations

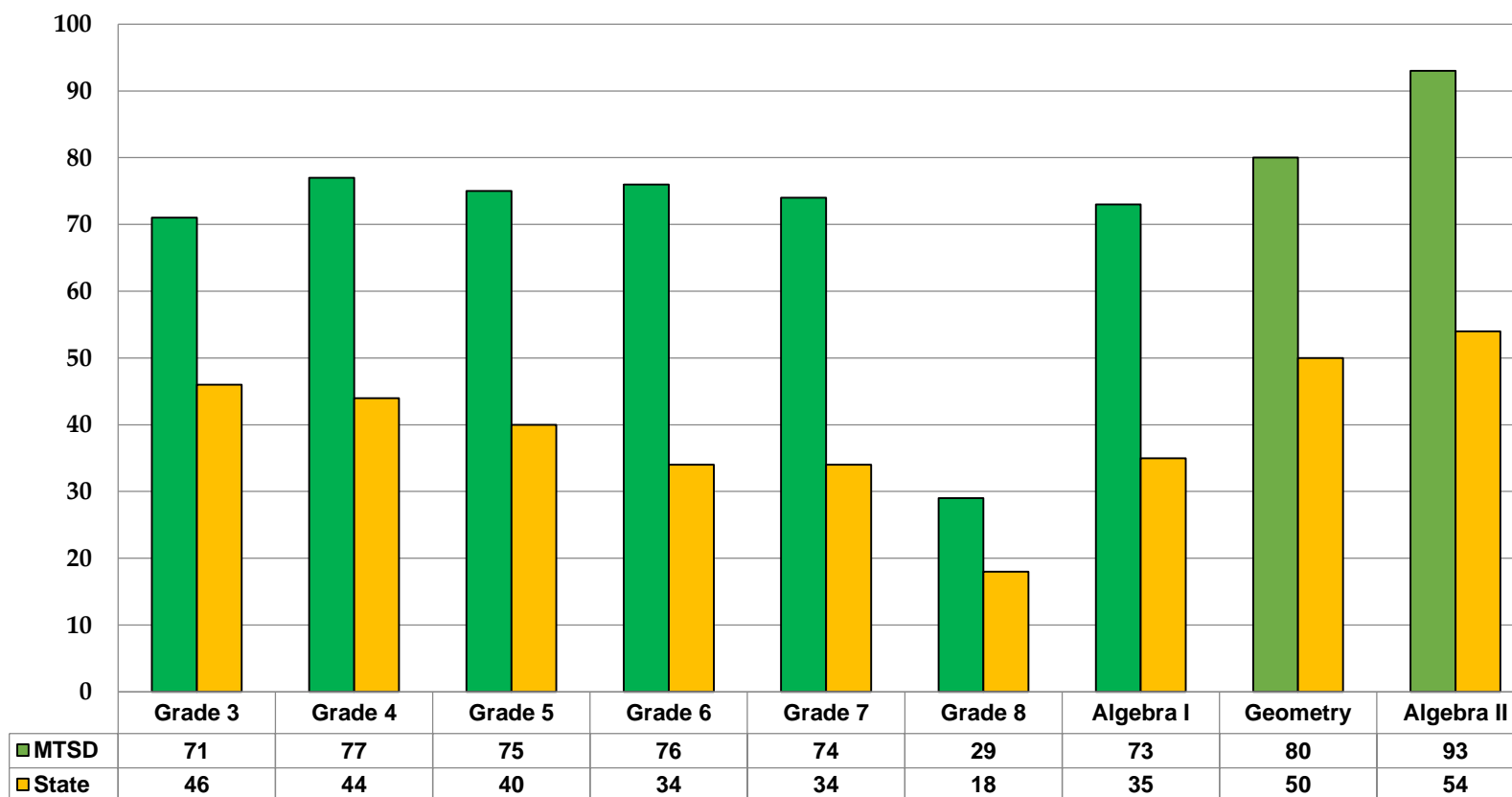
• Level 5: Exceeding Expectations

Grade	Level 1 2022	Level 1 2023	Level 2 2022	Level 2 2023	Level 3 2022	Level 3 2023	Level 4 2022	Level 4 2023	Level 5 2022	Level 5 2023	Change in Level 1 and Level 2 from 2022 to 2023	Change in Level 4 and Level 5 from 2022 to 2023
3	7	3.6	10	6.5	16	18.6	40	45.6	28	25.7	- 6.9	+ 3.3
4	3	3.4	8	5.6	21	14.1	50	54.7	18	22.2	- 2	+ 8.9
5	4	3.6	6	6.4	15	15.5	52	44.0	24	30.5	+/- 0	- 1.5
6	3	2.4	7	4.6	25	16.6	51	52.7	14	23.6	- 3	- 1.5
7	2	1.9	7	5.3	30	18.9	57	61.5	4	12.5	- 1.8	+ 11.3
8*	22	12	39	24.3	26	35.5	8	28.0	0	.9	- 24.7	+ 13
Algebra 1	1	2.3	7	7.8	16	17.4	72	53.9	4	18.7	+ 2	+ 20.9
Geometry	0	.4	4	.8	24	47	62	60.4	9	19.2	- 3.8	+ 5.9
Algebra 2	0	0	0	.6	6	6.3	61	64.4	32	28.8	+ .6	+ .2

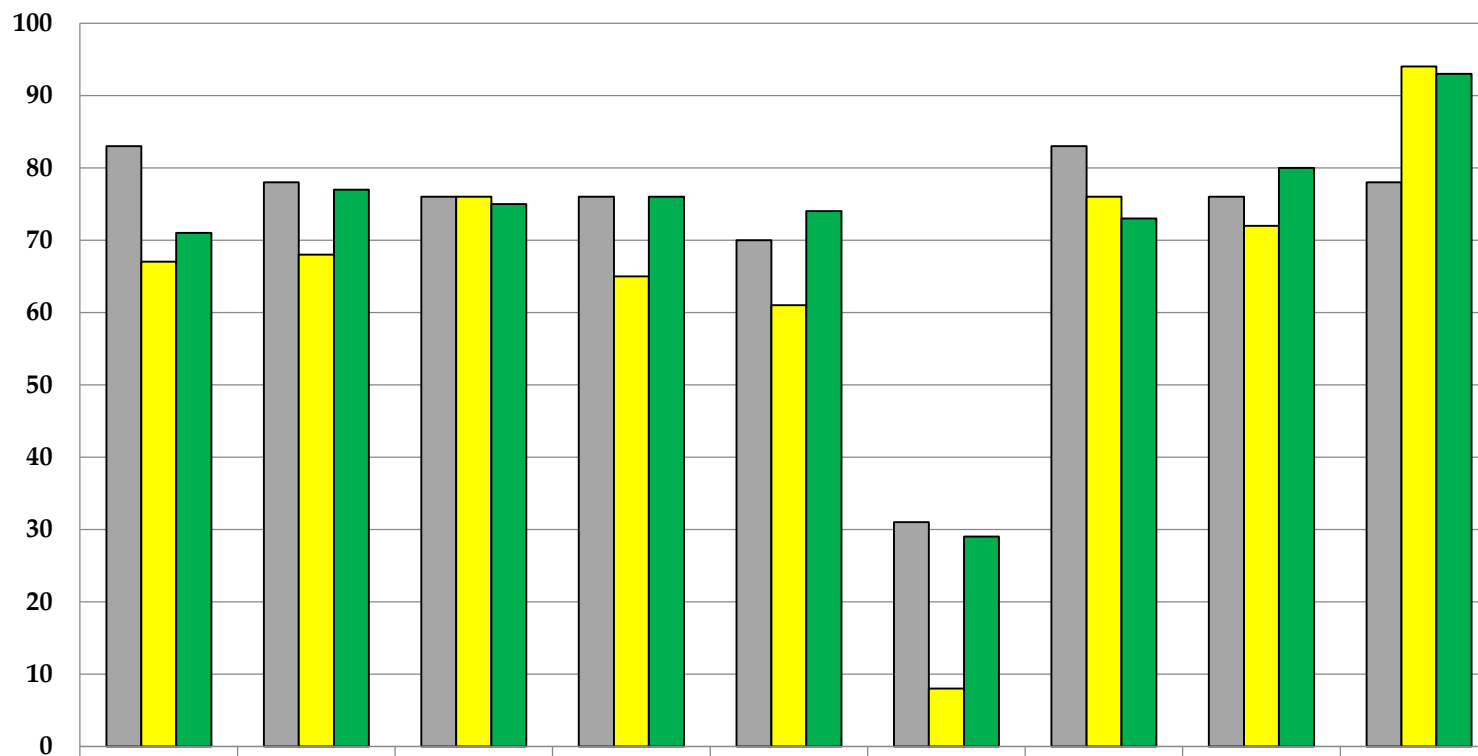
Notes: *Some students in grade 8 participated in the NJSLA Algebra I assessment in place of the 8th grade math assessment. The NJSLA Math 8 outcomes are not representative of grade 8 performance as a whole. Percentages may not total 100 due to rounding.



Comparison of Montgomery and the State Spring 2023 NJSLA Administration Math Percentages of Students Meeting & Exceeding Expectation



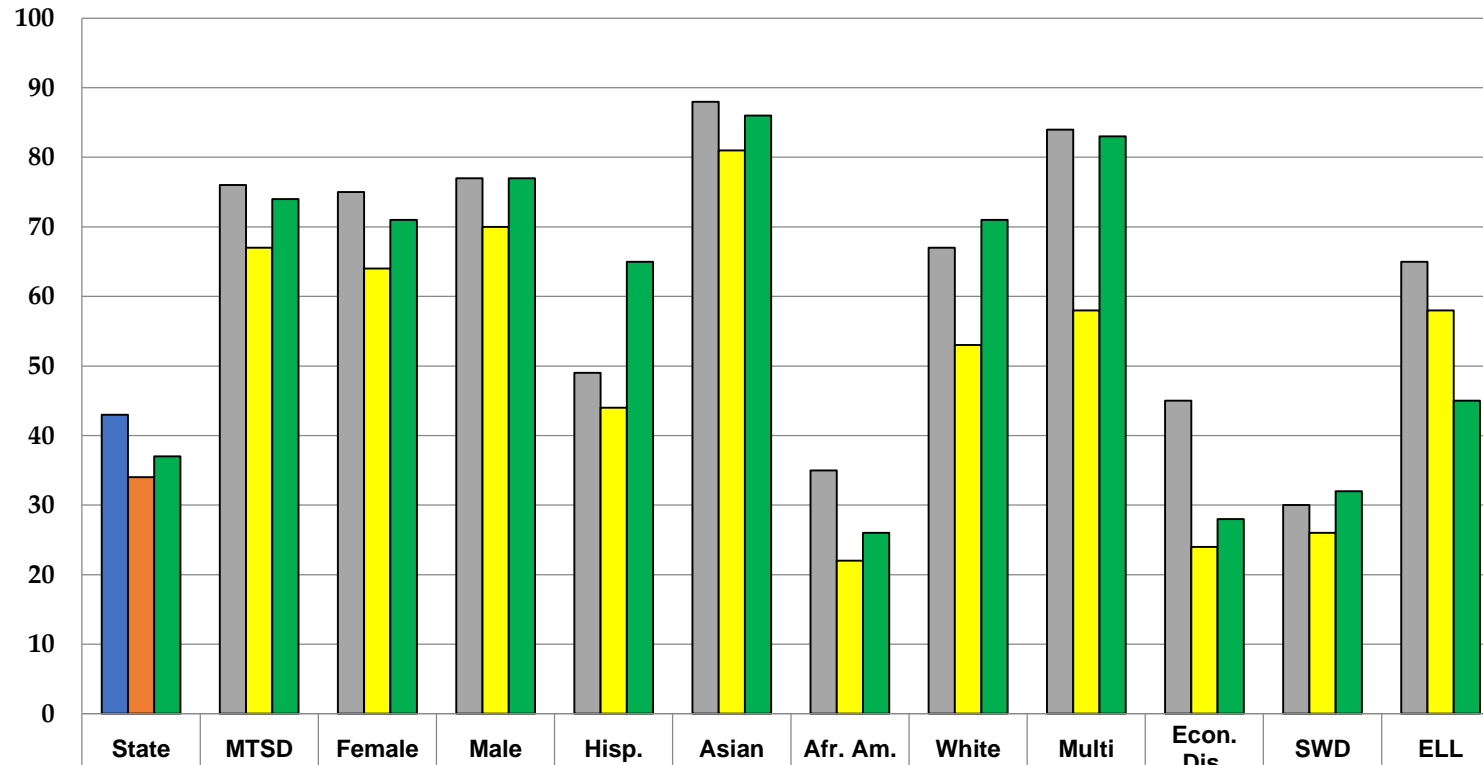
Comparison of Montgomery's Spring 2019, Spring 2022 and 2023 NJSLA Administrations Math Percentages of Students Meeting & Exceeding Expectation



	Grade 3	Grade 4	Grade 5	Grade 6	Grade 7	Grade 8	Algebra I	Geometry	Algebra II
■ % Level 4&5 2019	83	78	76	76	70	31	83	76	78
■ % Level 4&5 2022	67	68	76	65	61	8	76	72	94
■ % Level 3&4 2023	71	77	75	76	74	29	73	80	93



Comparison of Montgomery's Spring 2019, Spring 2022 and 2023 NJSLA Administrations Math Percentages of Students Meeting & Exceeding Expectation by Demographic Groups



■ % Level 4&5 2019	43	76	75	77	49	88	35	67	84	45	30	65
■ % Level 4&5 2022	34	67	64	70	44	81	22	53	58	24	26	58
■ % Level 4&5 2023	37	74	71	77	65	86	26	71	83	28	32	45





Noteable Achievements (Math)



- Majority of our grade-levels are trending towards pre-pandemic achievement levels.
- Increase in Universal Design for Learning strategies which allow more students to access and master content.
- Increase in data-driven, targeted instructional practices.
- Curriculum adjustments for SY23-24 based on students needs.



Math Interventions



Elementary (K-4)

Implementation of STAR360 assessment platform to monitor students progress and determine students in need of interventions.

Implemented Bridges Math program K-3

Middle (Grades 5-8)

An instructional shift within our intervention programs from curriculum support and to a more data-driven intervention model.

Utilization of technology enhanced digital platforms to increase students practice and achievement.

High (Grades 9-12)

Data-driven, learning team articulation focused on students achievement and instructional areas of focus.

Continued success through math lab and Math Connections classes.

New Jersey Student Learning Assessment (NJSLA)

**Results:
Spring 2023 Administrations**

Science

NJSLA Science Performance Levels



NJSLA Performance Level	Descriptor
Minimal	Demonstrate a minimal understanding of the NJSLS-S
Limited	Demonstrate a limited grade-level understanding of the NJSLS-S
Proficient	Demonstrate appropriate grade-level understanding of the NJSLS-S
Advanced	Demonstrate advanced understanding of the NJSLS-S





NJSLA Science Domains & Practices



The Domains are the content components related to specific disciplines of science

- **Earth & Space Science**
- **Life Science**
- **Physical Science**

The Practices are methods by which scientists investigate and build models and theories about the world

- **Investigating Practices**
- **Sensemaking Practices**
- **Critiquing Practices**



Comparison of Montgomery's Spring 2022 and 2023 NJSLA Administrations Science – Percentages



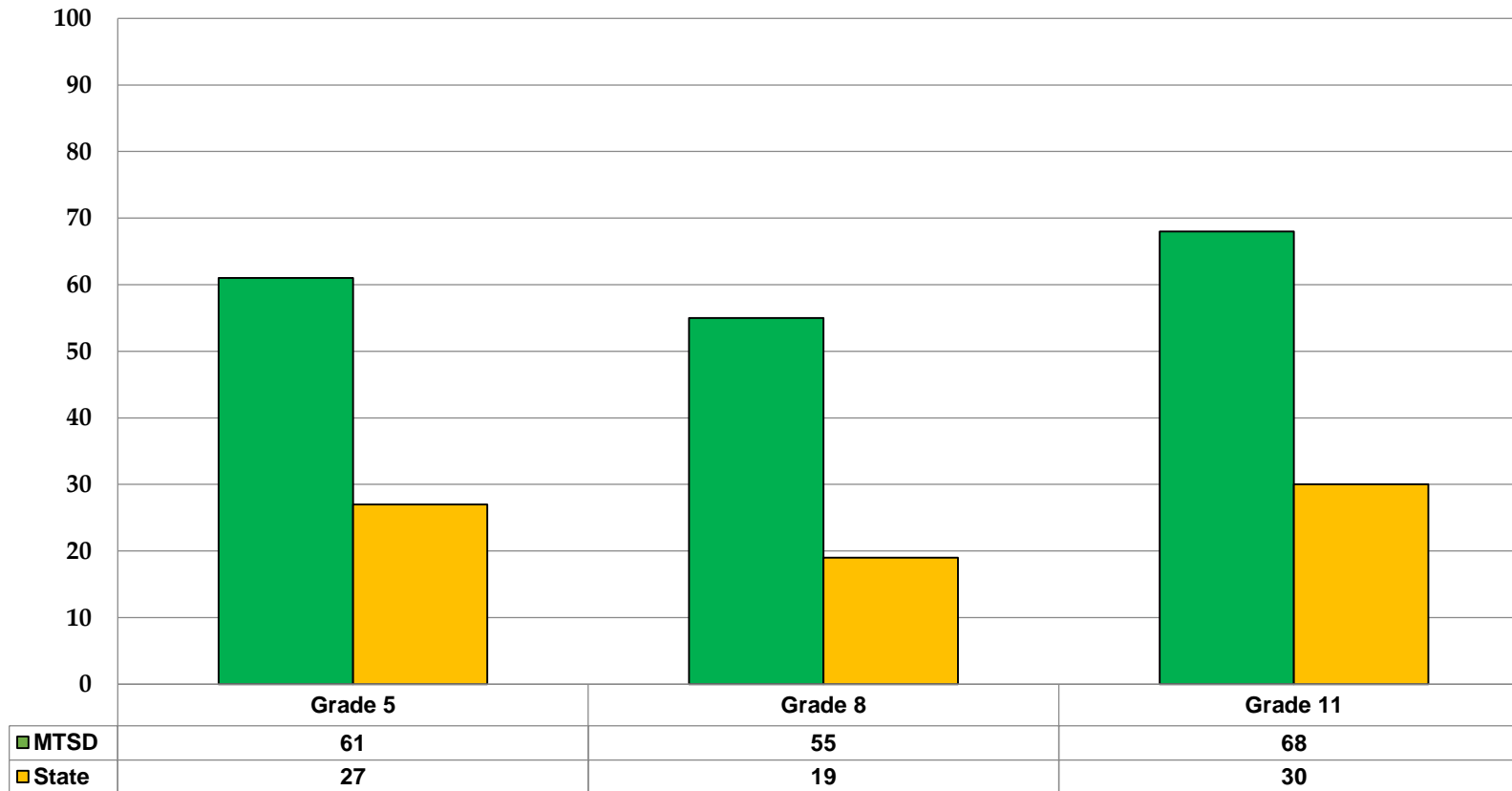
- Level 1: Below Proficient
- Level 2: Near Proficiency
- Level 3: Proficient
- Level 4: Advanced Proficiency

Grade	Level 1 2022	Level 1 2023	Level 2 2022	Level 2 2023	Level 3 2022	Level 3 2023	Level 4 2022	Level 4 2023	Change in Level 1 and Level 2 from 2022 to 2023	Change in Level 3 and Level 4 from 2022 to 2023
5	13	11	27	29	38	37	22	24	+/- 0	+/- 0
8	13	8	41	37	31	37	15	18	- 10	+ 9
11	8	12	17	20	39	38	35	30	+ 7	- 6

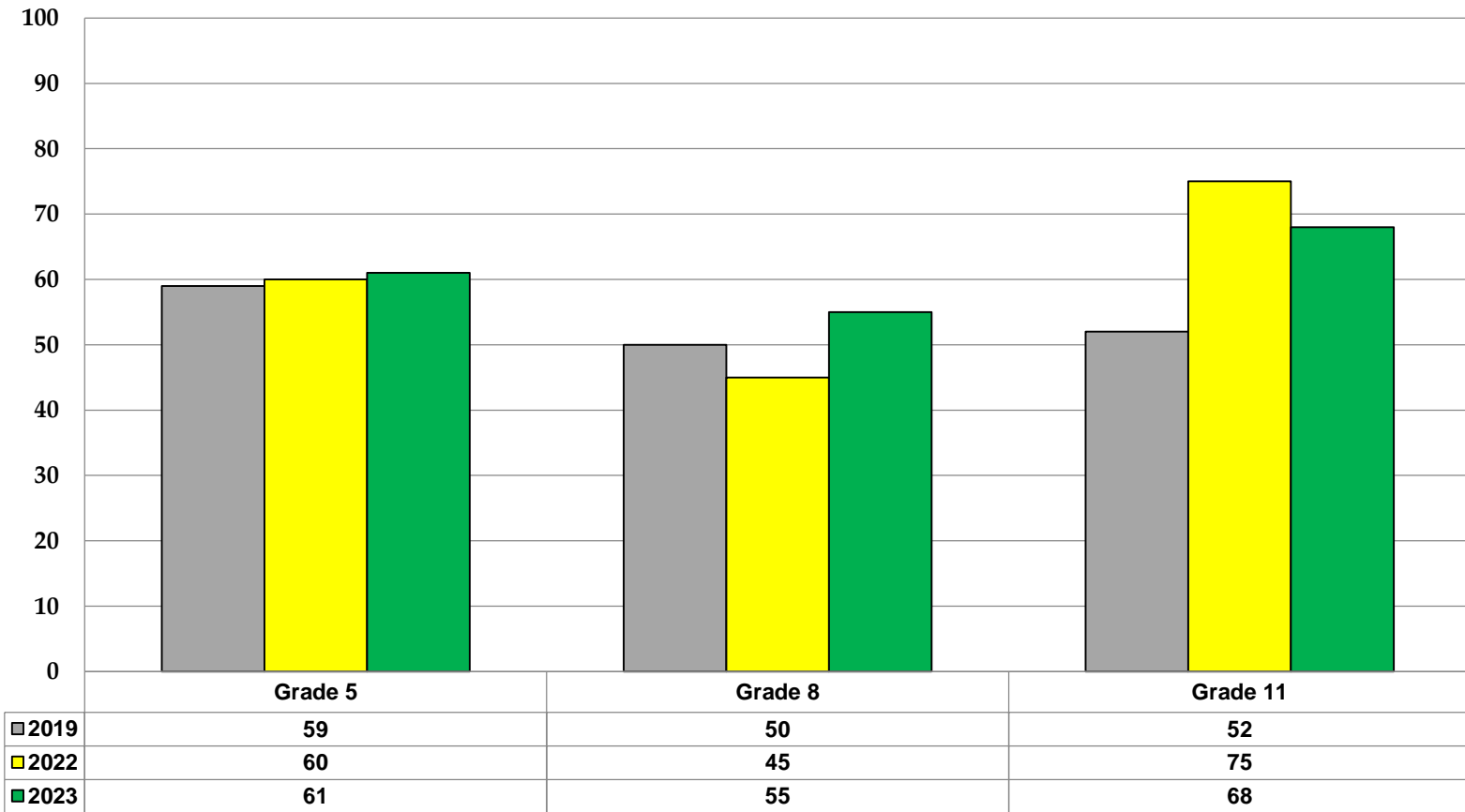
Notes: Percentages may not total 100 due to rounding.



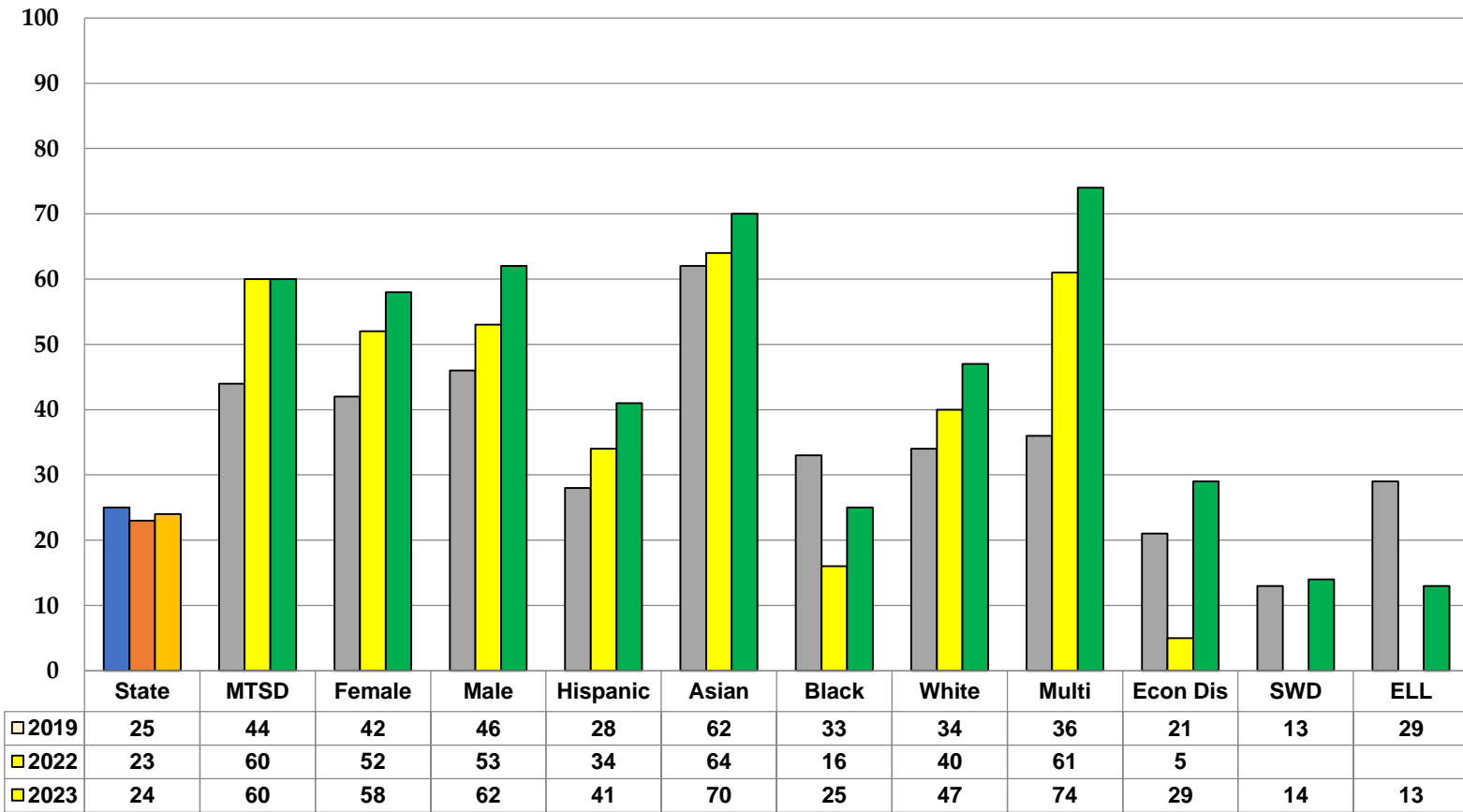
Comparison of Montgomery and the State Spring 2023 NJSLA Administration Science Percentages of Students Proficient & Advanced Proficient



Comparison of Montgomery's Spring 2019, 2022 and 2023 NJSLA Administration Science Percentages of Students Proficient & Advanced Proficient



Comparison of Montgomery's Spring 2022 and 2023 NJSLA Administrations Science– Percentages of Students Proficient & Advanced Proficient by Demographic Groups



*SWD & ELL for 2022 was below the >N





Noteable Achievements (Science)



- Aligned all curriculum to NJSLS 2020
- Increased staff development on implementing NGSS, which focuses more on scientific thinking skills
- Increase in Universal Design for Learning strategies which allow more students to access and master content.



Science Interventions



Elementary (K-4)

Emphasis on aligning local assessments to NJSLA

Continued emphasis on UDL classroom strategies

Middle (Grades 5-8)

Emphasis on aligning local assessments to NJSLA

Additional digital resources.

Evaluating new MS textbooks

High (Grades 9-12)

Emphasis on aligning local assessments to NJSLA

Evaluating and streamlining resources for easier student access

Continued emphasis on UDL classroom strategies

New Jersey Tiered System of Supports

